



Find and map your Personally Identifiable Information (PII) and benchmark your access risks EPI-USE Labs' SAP data privacy assessment service



Your SAP® system captures a large amount of sensitive information, and you might have customized functions in your system to meet your specific business requirements. Sensitive data needs to be carefully managed to avoid data breaches, and in accordance with data privacy legislation.

EPI-USE Labs can help you to understand and identify your Personally Identifiable Information (PII), and assess your access risks. Our comprehensive service covers:

- **Data Discovery:** analysis of your SAP Data Dictionary
- **Consulting services:** analyzing Data Discovery results, and quantifying your PII data map
- **Managed workshops:** run by EPI-USE Labs' data privacy specialists, with your functional and technical teams
- **SAP Data Privacy and Risk Assessment analysis:** detailed output document
- **Enhanced discovery report:** an optional additional service, analyzing your SAP access risks.

Why do you need to understand your sensitive SAP data?

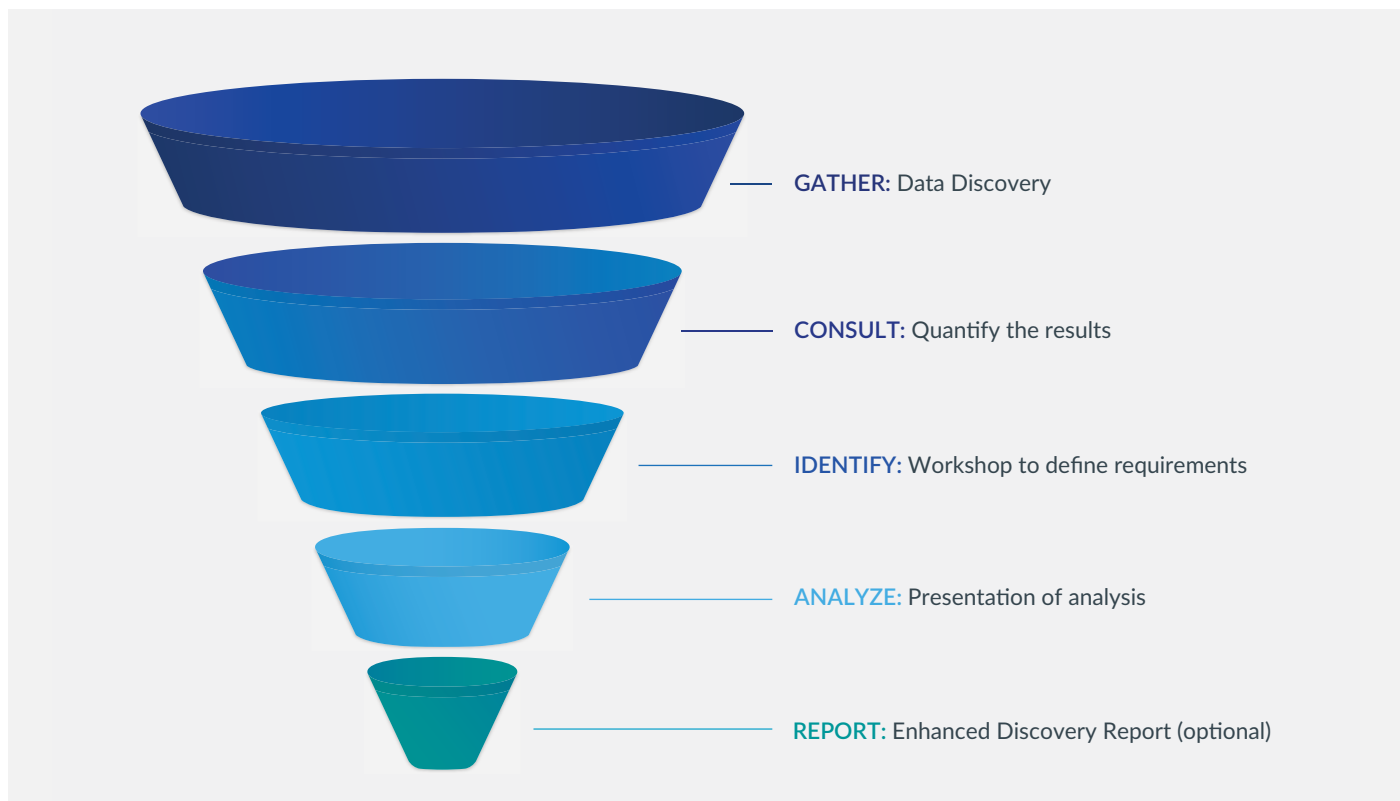
Extensive sensitive data about your customers, vendors, and employees is held in your SAP system. When addressing your data privacy, taking the SAP data model into consideration is critical; if you update one field, it will populate the value in different places throughout your system. In our experience, one personally identifiable value can be replicated up to a 100 times throughout your system. With this depth of data, you need to change the values consistently throughout the system to comply with data privacy regulations. Also, many long-term SAP business users have developed customized functions, including custom tables storing data and facilitating processing, which expands the target for sensitive data.

Benefits of understanding, identifying and mapping your sensitive data:

- Minimize the risks of exposing this sensitive data/PII
- Manage your data security
- Comply with global data privacy legislation.

Leveraging our decades of domain experience in the SAP data model, we can help you manage your sensitive data consistently between objects and systems.

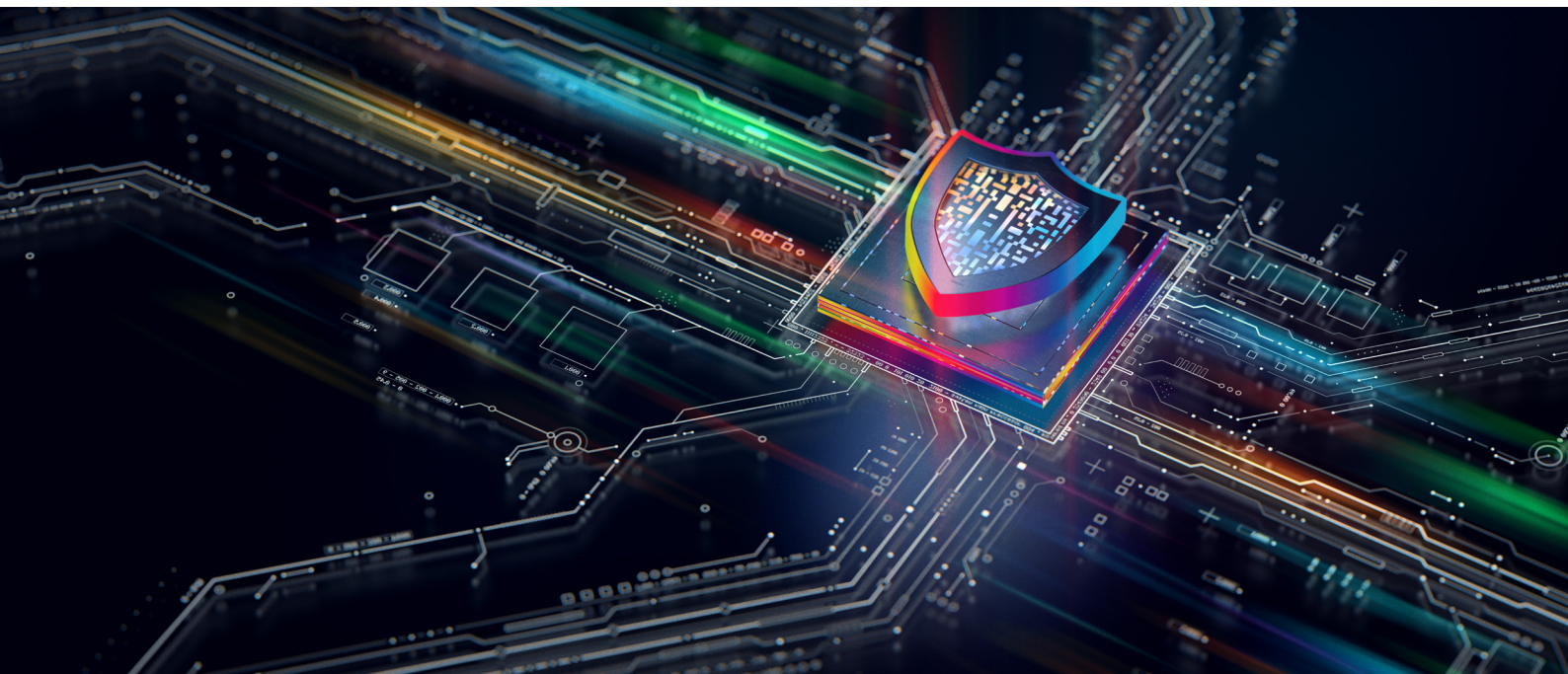
Comprehensive SAP data privacy assessment service



GATHER: Data Discovery

As an SAP development partner specializing in SAP data management, we have developed our own proprietary Business Object Definitions detailing the integration between objects and between systems. From this detailed table mapping, we have created a field-level integration map of all standard SAP PII fields.

Using this map, we have designed a **Data Discovery program** to analyze the Data Dictionary in your SAP system. It performs a wildcard search of sensitive data elements, and builds a list of tables and fields potentially containing PII. The tables are then validated to confirm they are populated.



CONSULT AND IDENTIFY:

Consulting services and managed data privacy workshop

Our data privacy specialists will run a workshop with your functional team to define the requirements for all PII data types including:

Production data retention requirements, per data type	For instance, remove bank and family details immediately when an employee becomes inactive, contact details after five years and full redaction after 10 years
Redaction	What action should be taken in Production once a data subject becomes eligible for redaction?
Disclosure	Which data from SAP should be included in the Subject Access Request PDF?
Non-production data scrambling	What actions should be taken per data type, and are there exceptions or conditions?
Landscape review and system data inheritance	Which systems will ingest the scrambled data and will scrambling impact this?

Our trained consultants have experience in many industries globally. They understand the complexity of data privacy, and can share their extensive experience with you.

There is no license cost for this service, and we would expect a typical SAP ECC engagement to take five days, over a two-week period:

- Three days – Data Discovery and technical system analysis
- One day – Workshop with your business and compliance teams
- One day – Documentation and presentation of results.

We recommend face-to-face workshops, but can work either remotely or on site.

ANALYZE:

SAP Data Privacy and Risk Assessment analysis

The output will be collated in our in-depth SAP Data Privacy and Risk Assessment analysis document, informing your business, compliance team, and data protection officers of the level of risk in your SAP environment.

This will be presented in a follow-up meeting with the project stakeholders, with an outline of costs for the delivery



REPORT:

Enhanced Discovery Report (optional additional service)

With an additional two days' input, we offer an **Enhanced Discovery Report** with our strategic partner Soterion, considering both your data privacy risk and access risk in the SAP system. Soterion focuses on building business-centric Governance, Risk and Compliance (GRC) solutions for SAP to enhance business accountability of risk.

A file export will be taken from your SAP instance and loaded to a temporary instance of Soterion, hosted in a local datacenter, to complete an analysis and present the results.

Soterion has a standard access risk rule-set. Whether you already run a GRC solution or not, these pre-built rules will measure your compliance status.

Highlights of the key insights provided as a part of this enhanced service:

Privacy data access risks	Segregation of duties (SOD)	Cross-legal jurisdiction data access	Critical transaction risk
Most GRC solutions are focused on segregation of duties and fraud avoidance. Soterion performs these functions, and also has built a rule-set to analyze who has access to PII data.	Who has access to both submit and approve payments, for example? Soterion will identify all the users who hold conflicting access in the system.	Can your users from the US access European employee and customer data, or vice versa? If yes, which users would be affected in creating a Data Shield?	Who has direct access for table maintenance, or can run programs directly? Is Vendor and Customer maintenance restricted to the correct people?

With these reports and others, EPI-USE Labs and Soterion will provide you with a Benchmark Risk Assessment of both your data privacy and access risks, along with recommendations on how to address these risks.



As a global software solutions and managed services company, EPI-USE Labs helps you to maximise the performance, management and security of your SAP and SAP SuccessFactors systems. Our clients tell us every day how we have transformed their business operations. Contact us to find out how we can help you solve your business challenges.

epiuselabs.com | sales@labs.epiuse.com

EPI-USE Labs is a member of groupelephant.com.

