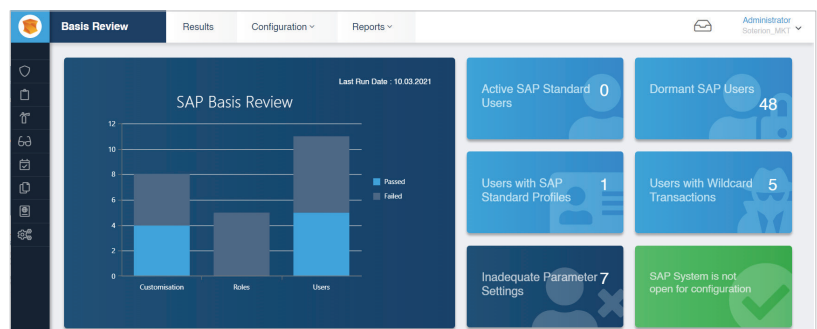


# BASIS REVIEW MANAGER



## Inspecting the SAP Basis Configuration to Ensure Compliancy

SAP Basis Configurations provide system-level controls to secure an SAP system. These configuration settings can be set up to be in line with your specific security requirements. The Soterion Basis Review Manager will inspect your SAP Basis Configuration against a set of rules that are based on industry best practices. Since these configurations usually form part of an annual external audit, our Basis Review Manager will allow you to be prepared, and will establish complete compliance to avoid adverse audit findings.



The Basis Review Manager consists of a number of checks that can be executed against your SAP system. The results will be highlighted as either passes or fails, with the option of mitigating failed reports. Examples of typical tests are:

### Parameter Settings (RSPARAM)

- ✓ Password lengths, expiry and complexity
- ✓ Restricting multiple logons
- ✓ Examining table logging

### Role Checks

- ✓ Roles that are in the Production environment, but not assigned to users
- ✓ Roles that were created or changed in the Production environment
- ✓ Roles with wildcards for transactions

### User Checks

- ✓ Users who have developer keys in the Production environment
- ✓ Test users who are working in the Production environment
- ✓ Users who have SAP standard roles in the Production environment

Basis Review

Results

Configuration

Reports

?

Results

Rerun Tests

Export to ZIP

Rule Category

Rule Identifier	Name	Description	Risk Level	Type	Passed	Last Run Date
Rule Category: Customisation						
C01	Inadequate Parameter (RSPARAM) settings	Identify inadequate parameter (RSPARAM) settings	Medium	Audit	✗	10.03.2021
C02	Non productive Company codes	Identify non productive Company Codes	Medium	Housekeeping	✗	10.03.2021
C03	Prohibited Passwords	Identify prohibited passwords (from table USR40)	Medium	Housekeeping	✓	10.03.2021
C04	SCC4 Client Settings	SCC4 Client Settings	Medium	Audit	✓	10.03.2021
C05	List of critical tables being logged (esp T000)	List of tables that should be logged	Medium	Audit	✓	10.03.2021
C06	List of locked transaction codes	List of transactions that should be locked	Medium	Audit	✗	10.03.2021