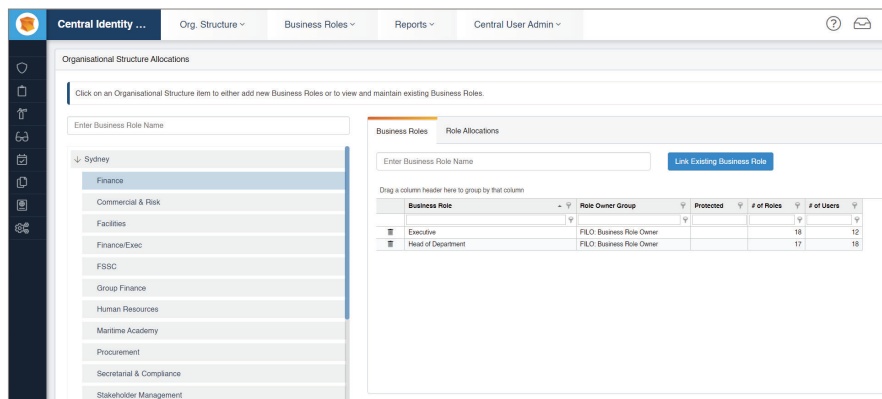


# CENTRAL IDENTITY MANAGER



## Business Roles

Address multiple business objectives with the Business Role concept.



A Business Role is a data container for a group of SAP single roles which can be from multiple SAP systems.

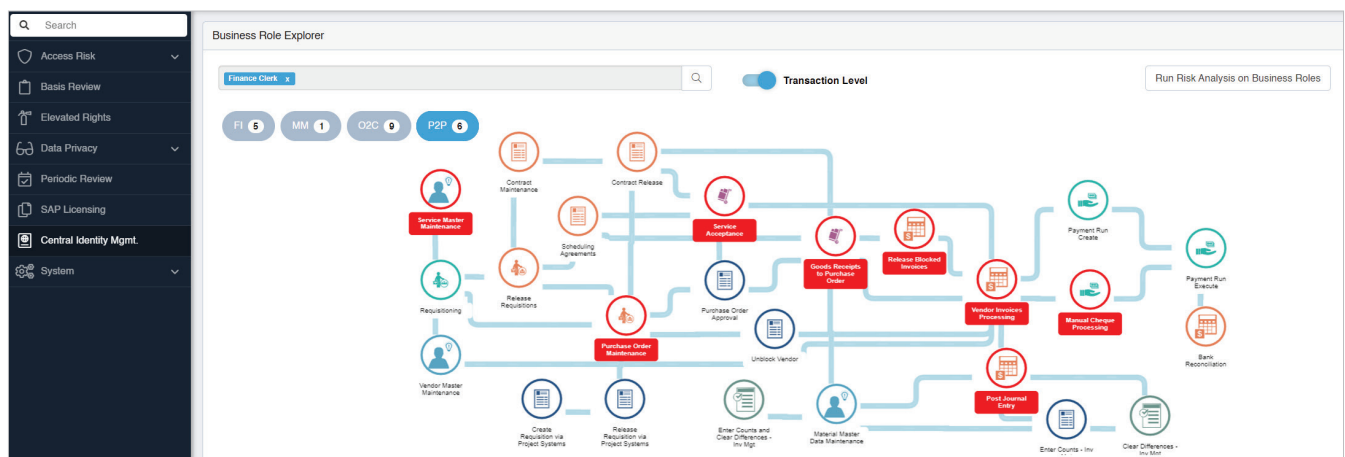
A Business Role is similar to an SAP Composite role with the added benefits:

- A Business Roles is more flexible as users can be assigned partial roles.
- SAP single roles from multiple SAP systems can be included in the Business Role.

The Business Role concept addresses several important GRC business objectives. These include:

- Increased efficiencies of the provisioning (Joiner – Mover – Leaver) process, as well as reducing the effort required to carry out a User Access Review.
- Standardization of job functions across the organization to reduce complexity.
- Enhance business accountability of risk by presenting SAP access in a more business-friendly manner.

Business Roles to linked to Departments on the Organizational Structure to simplify finding the appropriate access for SAP users.



Soterion's Business Role functionality displays the SAP access contained in the Business Role using a visualization technique that converts the technical GRC language into a business-friendly language.

All actions that the Business Role is able to perform are highlighted (in red) in the business process flow, making it easier for Business Role owners to make informed decision.

## Central User Administration

Soterion's Central User Administration facilitates user management in non-production SAP systems (DEV, QAS). This reduces the support effort and associated costs required to manage user access in non-production SAP systems.

Central Identity ...
Org. Structure ▾
Business Roles ▾
Reports ▾
Central User Admin ▾

SAP Distribution Configuration

Add SAP Distribution System
Test Connections
Global Configuration

Drag a column header here to group by that column

Type	Description	System Identifier	Application Server	Instance Number	Client	Language	Environment
ECC	SAP S4 Hana Quality Assurance	ERQ	192.101.98.01	0	100	EN	QA
ECC	S4 Hana Development	ERD	192.198.101.98	1	100	EN	DEV
BW	BW Quality	BWQ	191.196.11.98	1	100	EN	QA

Global Configuration for SAP Distributed Systems

The configuration settings are applicable for all Distributed Systems.  
Select which activities will be replicated to the relevant Distribution Servers.

Creation of Users
Password Resets
Role Allocation
User Locking / Unlocking

☒
☒
☒
☒

Cancel
Save

Soterion provides the administrator with the added flexibility to decide which functions can be performed in the different distribution systems.