



EPI·USE®

Refresh-as-a-Service completed in 24 hours. Fully functional Sandbox environment provided; consumption of space and memory in Development client minimized.



*allbirds*



## About Allbirds

Allbirds is a footwear brand that specializes in making sustainable sneakers and casual shoes. It is based in San Francisco. The company was established in 2016 and has been progressive in producing footwear inspired by natural materials. Allbirds takes a sustainable approach when sourcing their materials, with a long-term goal of eliminating their carbon footprint.

## The Challenge

Allbirds needed to establish an additional SAP Sandbox environment on their SAP Development server to optimize the use of AWS platform resources. The solution would involve creating a new SAP client on the Development server and making a full copy from the Production server. The new client would then serve as the Sandbox environment. This needed to be done without impacting production performance or over-utilizing the limited space and memory of the Development system.

“The ability to refresh our lower environment data has been a pain point for some time.”

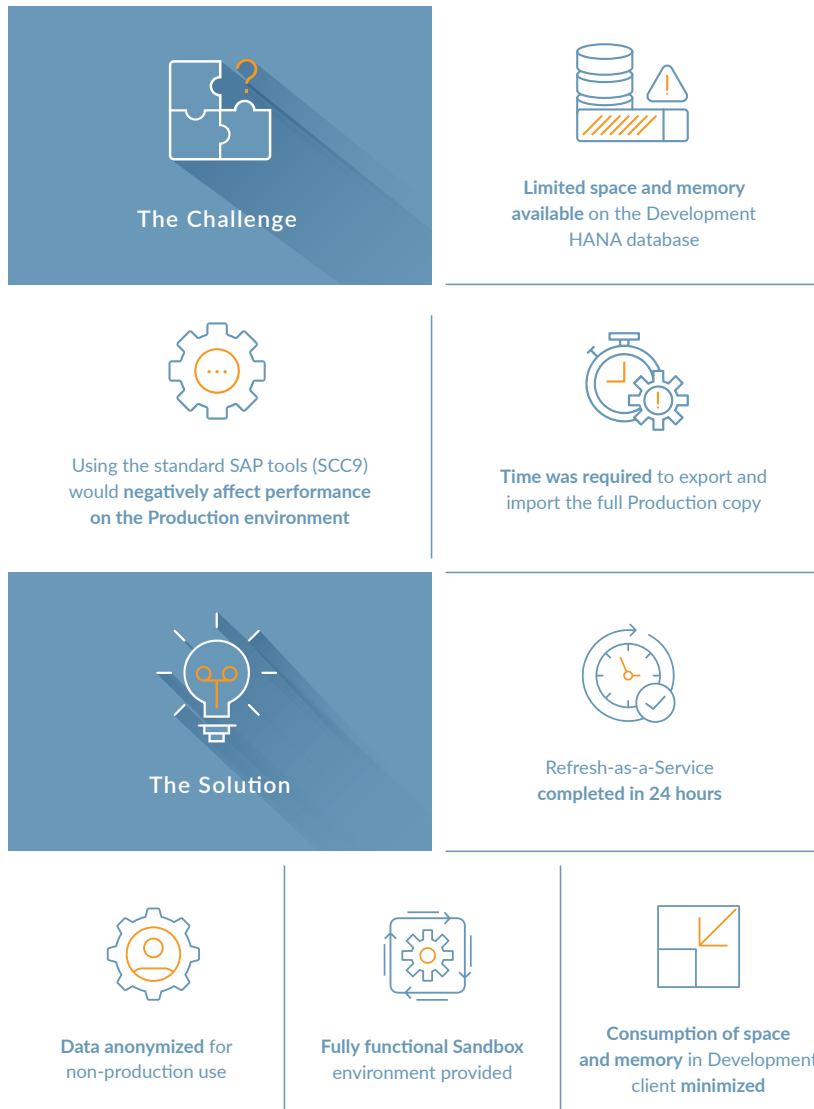
---

Jon Kula, Senior Director of Technology, Allbirds

# The Solution

EPI-USE offered Refresh-as-a-Service (RaaS) with the use of their specialized SAP data transfer product suite, Data Sync Manager™ (DSM). This service enables the copying or refreshing of SAP clients with a subset of Production data, while anonymizing the data for non-production use. The entire process was completed at Allbirds within 24 hours.

When creating the new client on the Development server, Allbirds chose to copy all master data, and only the last 18 months of transactional Production data. This provided a fully functional Sandbox environment, while minimizing the consumption of space and memory in the Development client. This process can be repeated in the future to refresh data, and can also be extended to refreshing data on any of the non-production servers.





“In addition to a smooth and easy refresh, I also appreciated the flexibility of EPI-USE in coming up with a right-sized solution that meets the need and scale of our business.”

Jon Kula, Senior Director of Technology, Allbirds

## The Benefits

In a timely manner, Allbirds was provided with a fully-functional Sandbox environment that meets their needs while efficiently using their existing server resources.



**Installed and configured Data Sync Manager**



**Performed an 18-month time-slice export of the Production system**



**Completed the new Development client build for use as a Sandbox**



**Built the Sandbox system without increasing database server resources**

“EPI-USE is a group of dedicated professionals, and masters of their craft. They installed and configured the RaaS tooling and ran it during off-hours without issues. They have established a great track record of success that gives me complete confidence in them.”

Jon Kula, Senior Director of Technology, Allbirds



## About EPI-USE Services and AWS

EPI-USE Services for AWS offers robust and scalable hosting solutions, based on AWS. As a Next-Gen Managed Services Provider (MSP) we provide managed services and consulting services for AWS, including assessment, development, migration, management, and optimization, allowing our clients to focus on their core business. By providing a flexible cloud migration methodology, we tailor our migrations to each client's unique requirements. This allows any business to move from traditional server environments to AWS quickly and efficiently, with little to no impact on existing environments.

**To learn more about how we can help your business, contact [info-aws@epiuse.com](mailto:info-aws@epiuse.com) or visit [epiuse.com/aws-services](https://epiuse.com/aws-services).**



## About EPI-USE Services for SAP

EPI-USE is an SAP® Gold Partner. Our clients can be confident that EPI-USE is a capable, experienced, and reliable partner for their SAP needs. With our extensive expertise and proven experience in SAP systems, we enable our clients to realize new efficiencies, insights and opportunities for growth. Our core capabilities, technical skills and cutting-edge software – along with the commitment from our wider group of companies – equip us to provide innovative solutions to business challenges and deliver value to our clients.



groupelephant.com is a largely employee-owned group of companies, nonprofits and impact investment organizations, with a strong global presence. The Group is characterized by a primary strategic imperative in terms of which it goes 'Beyond Corporate Purpose' in its day-to-day activities.